

PART OF THE WEST 1/2 OF SEC. 1 & PT NE 1/4 OF SEC. 2., T6N., R.1E., S.L.B. & M.

123

# EDEN LAKE MEADOWS 1

IN WEBER COUNTY

TAXING UNIT: 28

SCALE 1" = 100'

SEE PAGE 122

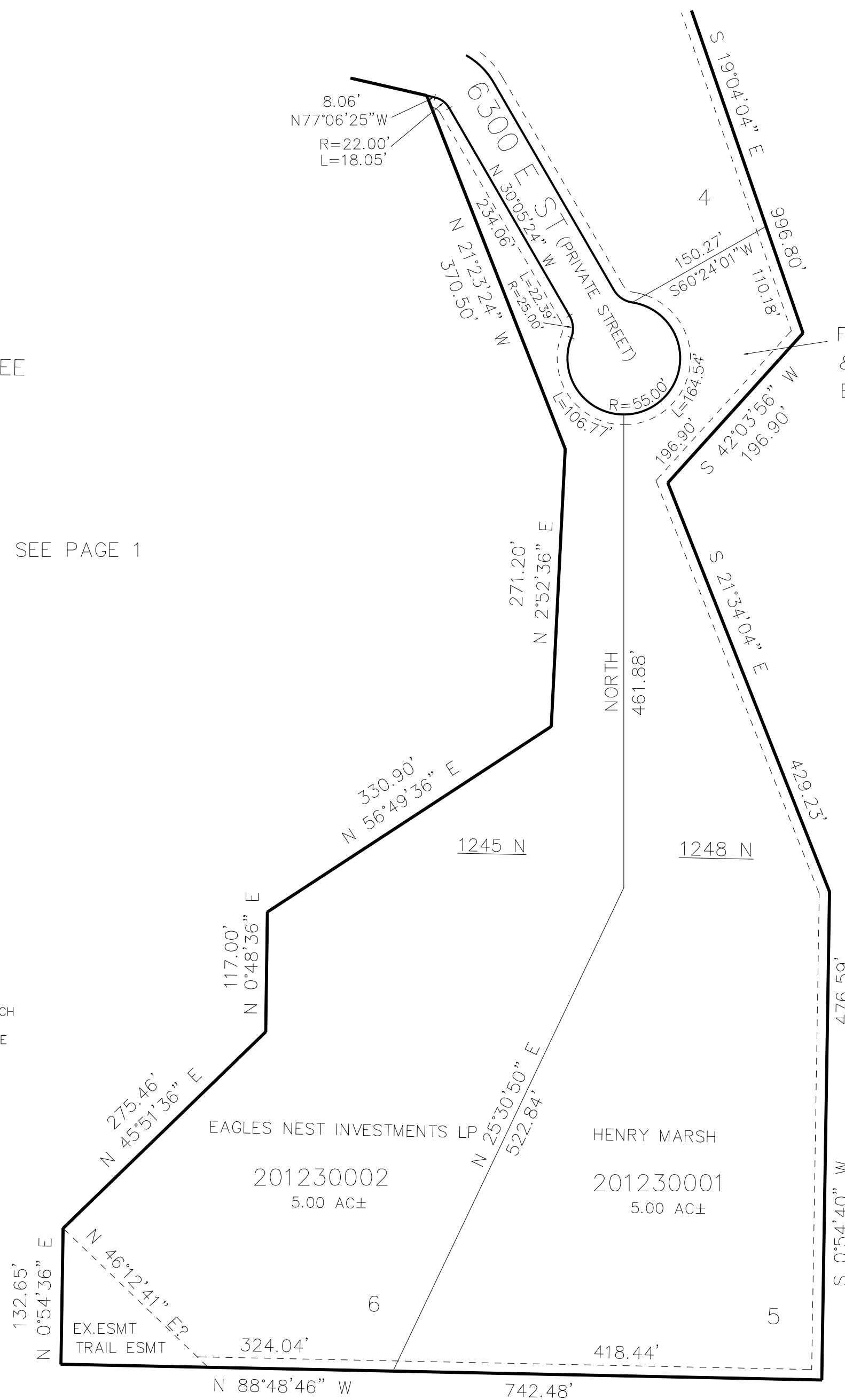
FOR SETBACKS SEE DEDICATION PLAT

SEE PAGE 1

FOR 30' INGRESS-EGRESS & STORM WATER RETENTION EASEMENT SEE DED PLAT

SEE PAGE 1

10' UTILITY & DRAINAGE EASEMENTS EACH SIDE OF PROPERTY LINES AS INDICATED BY DASHED LINES EXCEPT AS OTHERWISE SHOWN.



SEE PAGE 9

FOR COMPLETE ENG DATA SEE ORIGINAL DEDICATION PLAT IN BOOK 67, PAGES 84 TO 87 OF RECORDS.